



Cinergy

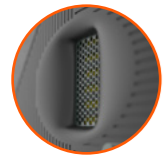
Product Information Guide

Bring cinema perfection home

We set out to create a new solution for premium home cinema, with unparalleled installation versatility and uncompromising sound quality, for the ultimate cinematic experience.

With our most advanced audio technologies, superior isolation methods and an installation focused design, Cinergy sets a whole new standard for home cinema that's unheard of, until now.

Cinergy combines a legacy of audio and design passion, with integrity and care, to bring cinema perfection home.



Flagship technologies engineered to optimise the audio experience



Flexible and smart vibration isolation solutions



Installation versatility with in-wall, on-wall & floor applications



Certified by THX® for the assurance of excellence



Performance

With five decades of audio expertise, we've brought together our ground-breaking technology to create captivating soundscapes, from the quietest of monologues to high-octane car chases.



Mid-Tweeter Array

Rotatable Mid-Tweeter Array

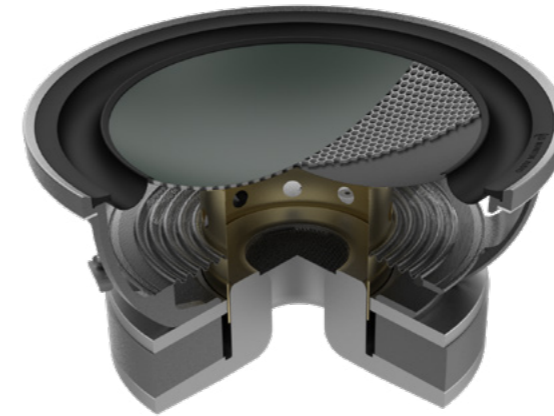
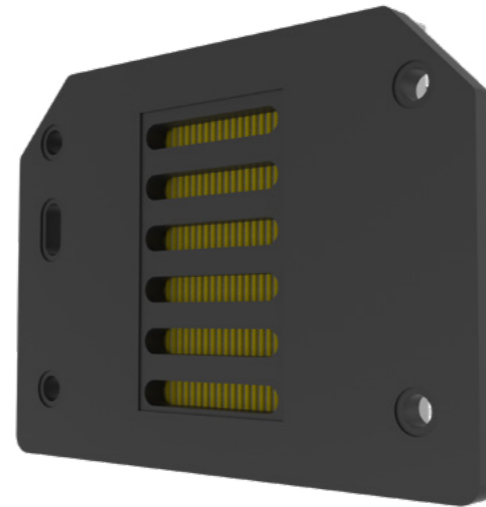
For added configuration versatility, the Mid-Tweeter Array can be rotated 90° to match vertical and horizontal installs. The Array on the Cinergy 200 and Cinergy 300 features two Mid-Range Drivers which double the power handling, improves efficiency and reduces reflections off ceilings and floors.



High-Frequency Transducer

Accurate, clear and lifelike sound

Using our Micro Pleated Diaphragm (MPD) technology, the Transducer on Cinergy acts like a super-fast accordion, squeezing the pleats to produce accurate and lifelike sounds with without immersion breaking distortion. So even with the volume pumped right up, the sound couldn't be any clearer.



Bass Driver

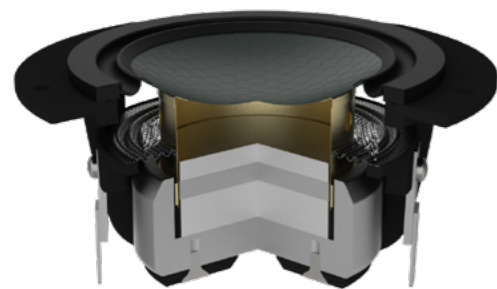
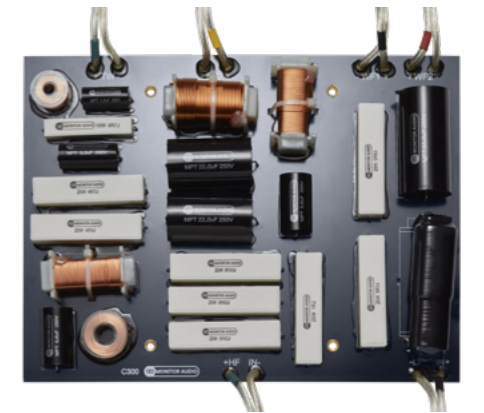
Very high power handling, sensitivity, excursion, and low distortion

The powerful Bass Drivers use our C-CAM cone material with Rigid Diaphragm Technology (RDT II) made up of ultra-thin layers making it very light and very strong. A 75mm voice coil and high power handling keeps the driver cool, even in the most demanding scenes. This produces loud and dynamic bass with the lowest distortion of any driver we've ever made.

Crossover

With 50 years expertise in creating loudspeakers, Monitor Audio has learned a lot about designing High quality crossovers .

For Cinergy, our engineers have spent a lot of time on power testing, ensuring that the crossover can not be a point of failure. This contributes to Cinergy speakers meeting our high power handling requirements ensuring performance from lowest levels to the highest SPL.



Mid-Range Driver

High power handling, high sensitivity, wide directivity

Paired with the Transducer are high sensitivity and powerful 2.5" Mid-Range Drivers. Employing our C-CAM cone material with RDT II technology for a clean and clear mid-range which is important for clarity.



THX® Certified Ultra

The Assurance of Excellence

The THX® Certified mark ensures the viewing and listening experience has passed critical industry standards.

Design & installation

The modular design allows installers or designers to choose how to integrate Cinergy, with a choice of isolation and fixing methods for a wide range of applications. Flexible installation options allow for integration into stud walls, fitting onto walls or securing onto the floor.



Rotatable Design

Rotatable for use vertically or horizontally

This feature enables product to be used vertically or horizontally for use as a centre channel.

Cinergy 100, Cinergy 200 & Cinergy 300 all have rotatable Mid-Tweeter Array which can be changed by simply loosening the bolt at the back of the cabinet.

The Monitor Audio badge can also be rotated to suit the configuration.

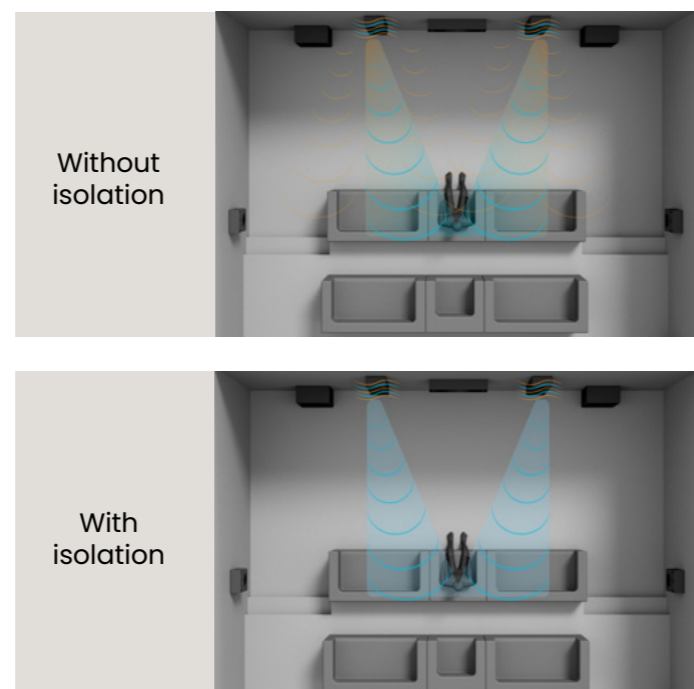


Isolation

Vibration reduction

By reducing vibration in connecting structures, the isolation accessories provided with Cinergy ensures powerful sound is delivered cleanly to the listeners.

The isolation accessories provided with Cinergy were tested to provide a reduction in unwanted vibration of up to 18dB.



Feet isolators

Locator bungs are made of 3 layers of hard silicone which screw into stud work or the floor. This enables the cabinet to be secured at the base without being screwed into the connecting structure, further minimising vibration.



Bracket isolators

Each speaker comes with a bracket isolator assembly which includes L shaped brackets for installing cabinets in-wall. The bracket isolators are made up of the top 2 layers of the isolation feet.



Interchangeable Pod

For flexibility in application

Cinergy 300's Mid-Tweeter Array can additionally be interchanged with the 8" octagonal Bass Driver, enabling adjustment of the Mid-Tweeter Array height depending on the application.

Cabinet Finish & Handles

Easy moving and lifting

The cabinet has been painted in a durable Chemthline (Polyurethane) finish.

To help with installation, handles have been designed into the cabinet of Cinergy 300 and Cinergy Sub15. This helps make moving and lifting the heavy cabinets just that bit easier.



Versatility that's unheard of

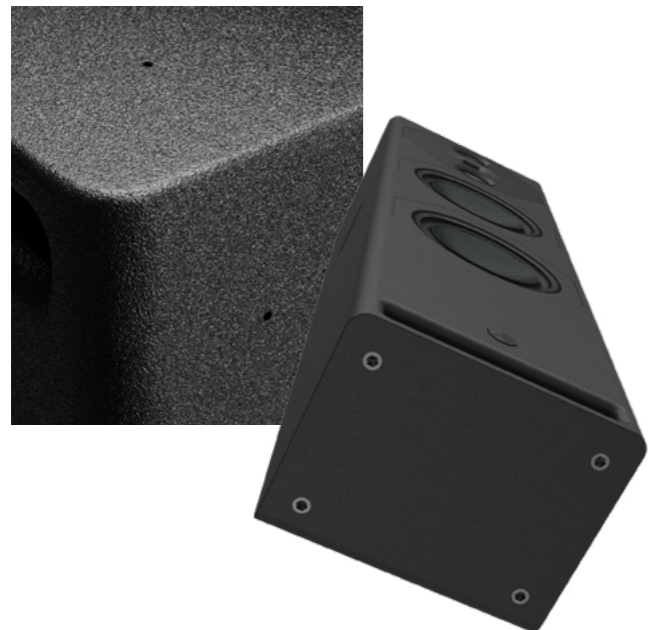
Cinergy's design allows for limitless combinations, and can be fitted together to form a whole sound wall that'll truly blow the audience away.



Designed to cinema industry standards

For example, Cinergy 300 has been designed to enable the tweeter to reach optimum listening height. The addition of the plinth and the ability to interchange the mid pod with the bass drivers give installers the tools they need to achieve the very best set-up.

Cinergy 100 has been designed to fit vertically into standard stud width construction.



Pilot holes and inserts

Easy to locate

Cinergy 100 and Cinergy 200 both have pilot holes on the top, side and base of the cabinet to help screw brackets and feet into the cabinet. The pilot holes help locate the self-tapping screws without the need to pre-drill. They also help installers locate where to put brackets and feet.

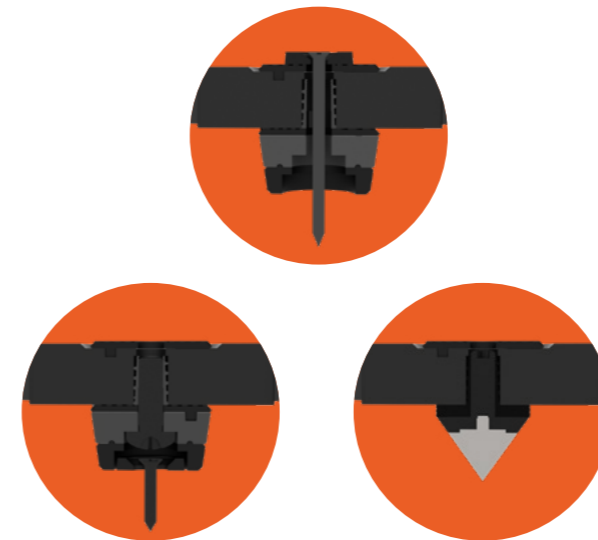
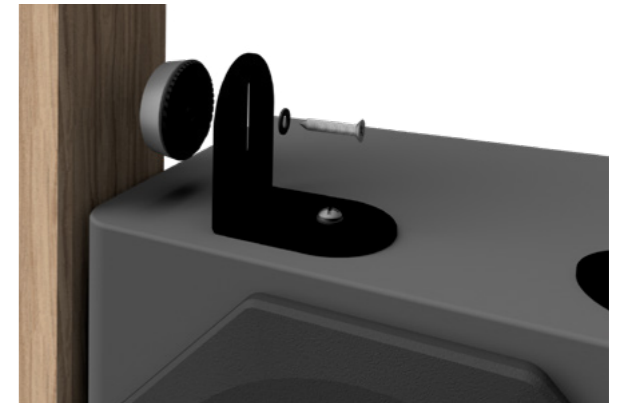
Cinergy 300 and Cinergy Sub15 both have M10 Inserts in the bottom of the cabinet for attaching the feet and the plinth

Installation Accessories

Brackets

All speakers and subwoofers come with the bracket assembly which enables speakers to be screwed into stud noggins or walls in scenarios like a sound wall. The slot design in the L bracket enables movement of the bracket during the install to allow installers to make sure the speaker and bracket isolators are correctly positioned before tightening the screws.

Cinergy 100 and Cinergy 200 have flat brackets recessed into the back of the cabinets which include T shaped holes for on-wall installations. Both speakers come with templates to help installers locate screws to hang the cabinets on.



Plinth

Fixings for different floor types

The plinth included with the Cinergy 300 can be used for fixing the speaker to the floor or sitting the speaker on carpet using different fixing methods.

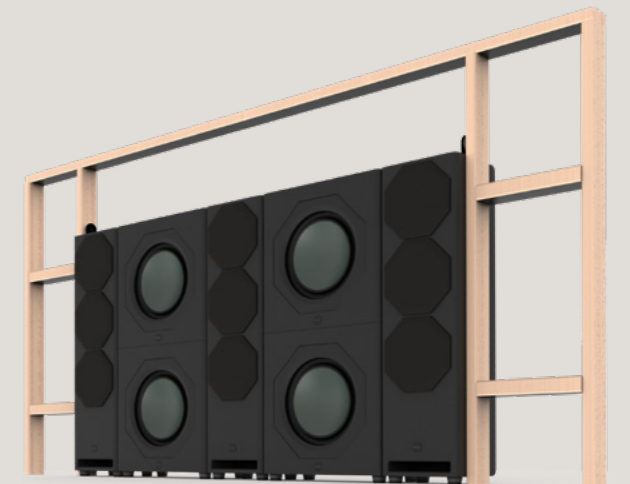
Sound Wall

Stackable

Cinergy Sub15 has been designed to be half the height of the Cinergy 300 making them stackable for use in a sound wall.

All models come with brackets and isolation accessories included for installers.

Both Cinergy 300 and Cinergy Sub15 have inserts in the bottom of the cabinets for the isolation feet.



Club Cinergy

Our aim is to create an exclusive club, giving accredited Cinergy installers around the globe access to new levels of service and support.



By becoming an authorised Cinergy installer, you are entering an exclusive global club, with access to new levels of expectations and support.

Our aim is to ensure that every Cinergy customer enjoys market reference service from you, from us and from everyone involved in the project.

Monitor Audio support for members of Club Cinergy:

- Your business details will be listed in our official Cinergy website
- You will join an elite group, invited to online seminars with our top designers and acousticians
- You will have access to a dedicated member of the MAG acoustics team
- Your feedback will support further development and updates of the Cinergy range
- You will be provided with a specific service of repair and spares dispatch

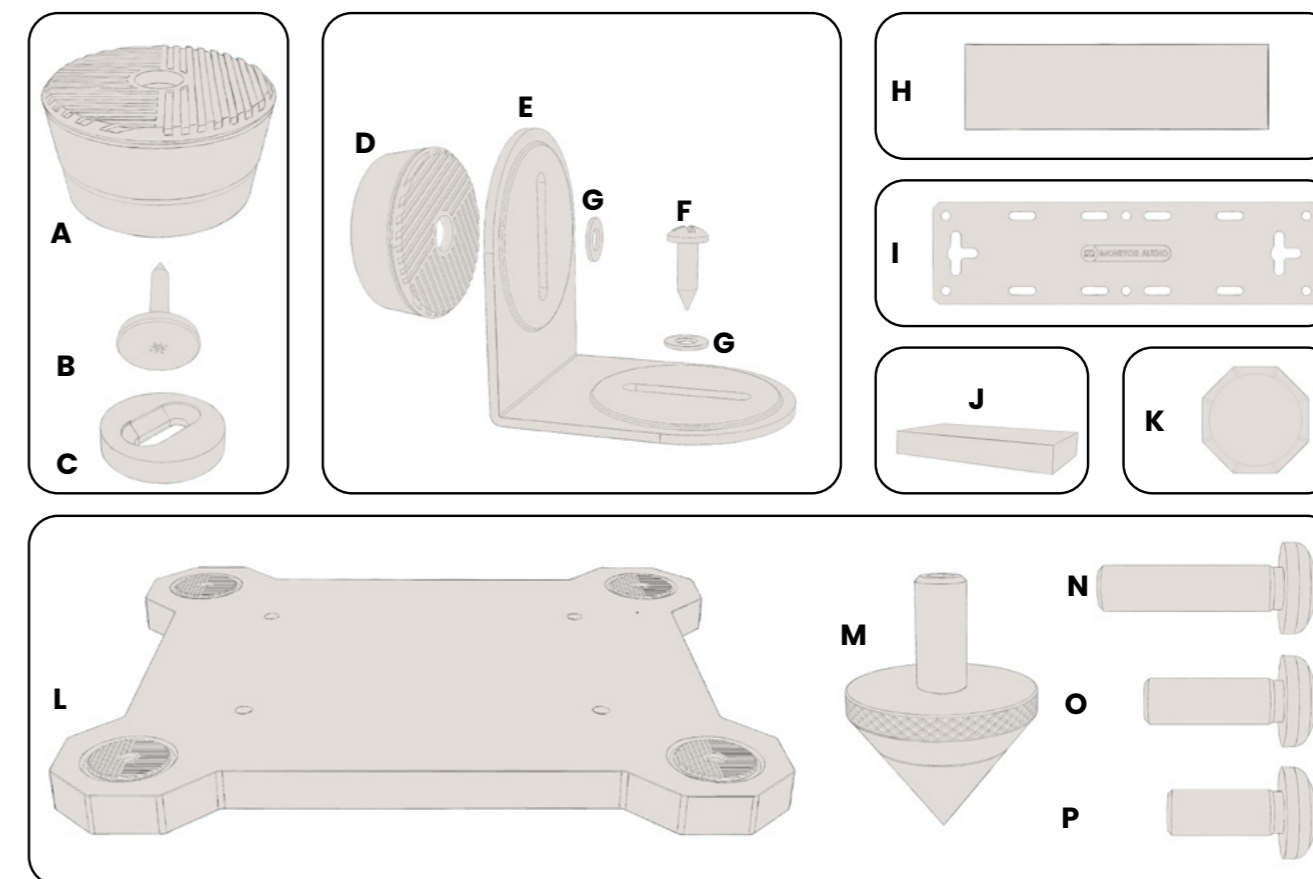
Requirements to become a Cinergy partner:

- Have adequate qualifications and certifications for cinema design & installation, such as THX, ISF, HAA
- Established CI business for 5+ years minimum
- Should be a Brand Ambassador for other MA products
- Proven portfolio of previous projects on par with Cinergy level
- High level of supporting social media to advertise completed projects

(Full list available in the Onboarding document)

What's in the box?

Cinergy speakers are provided with a complete set of accessories and tools, to facilitate installation and guarantee optimal performance, making it the most complete out-of-the-box solution on the market.



Label	Description	Cinergy 100 Qty	Cinergy 200 Qty	Cinergy 300 Qty	Cinergy Sub15 Qty
A	Isolator foot assembly	2	2	4	4
B	Large Head Screw	2	2	0	0
C	Isolator locator	2	2	4	4
D	Bracket isolator assembly	2	2	2	2
E	L shaped bracket	2	2	2	2
F	No 12 (5.5 mm) x 19 mm Screw	2	2	2	2
G	Washer	4	4	4	4
H	Isolation pads	2	4	4	4
I	On Wall/ Joining Bracket	2 (Fitted)	4 (Fitted)	1	0
J	Port Bung	2 (Fitted)	1 (Fitted)	1	0
K	Grille	2	3	3	0
L	Plinth	0	0	1	0
M	Spiked foot assembly	0	0	4	0
N	Plinth to cabinet screw (M10 x 40 mm)	0	0	4	0
O	Isolation foot to plinth screw (M10 x 30 mm)	0	0	4	0
P	Isolation foot to cabinet screw (M10 x 25 mm)	0	0	4	4

Amplifier Power Selection

In order to meet the SPL requirements there is a calculation that has to be done to determine the right amplifier output power Vs Main Listening Position (MLP) distance Vs SPL Level.

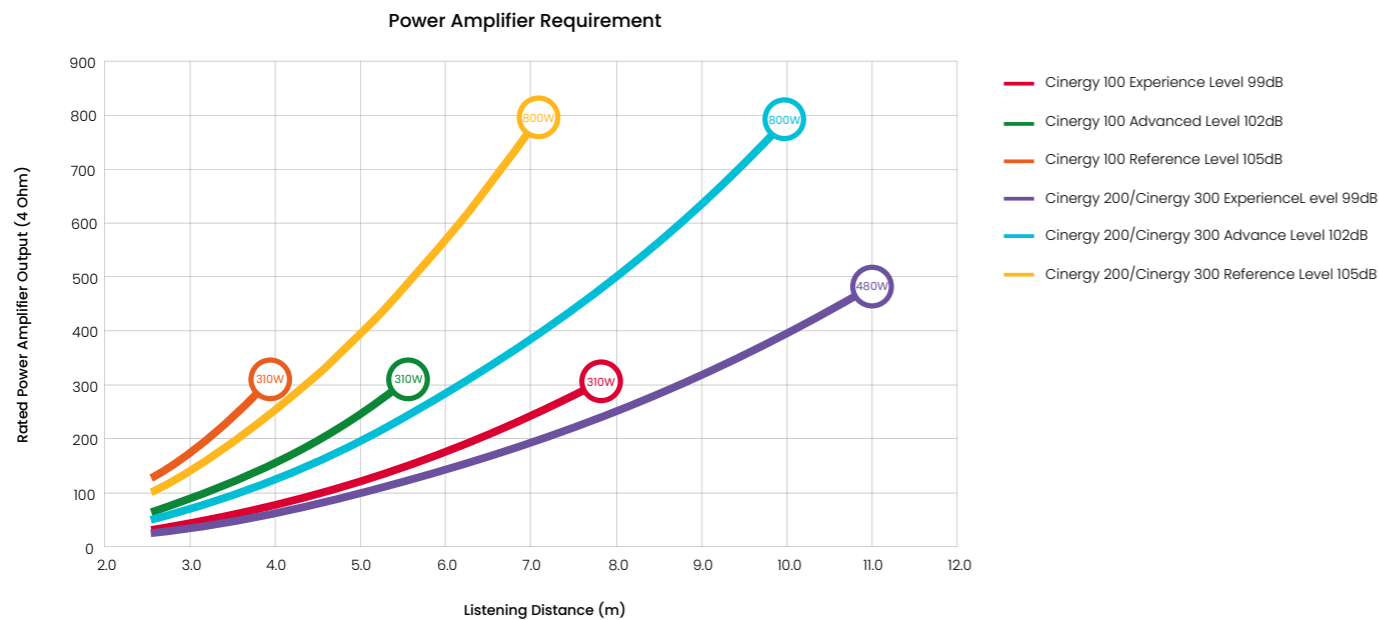
There are 3 main SPL's to meet:

Reference Level - 105 dB peaks: THX's ultimate sound reference level. It is the level that directors intend their soundtracks to deliver at full dynamic range for the dialogue, effects, the score, etc. Everything from the quietest whisper to the biggest explosion should be experienced at these levels for the ultimate in movie experience.

Advanced Level - 102 dB peaks: Still very close to reference levels, this performance level gives you almost the complete dynamic range and yet still delivers an immersive experience that will blow you away.

Experience Level - 99dB peaks: Whilst not the ultimate reference level, this elevated level of performance shouldn't be sniffed at and will be plenty loud enough to give you a fully immersive experience.

Our acoustic engineers have developed the graph below that shows the recommended amplifier power output in order to achieve the desired SPL Levels for each speaker Vs the MLP distance from the screen:



Specifications



Model	Cinergy 100	Cinergy 200	Cinergy 300	Cinergy Sub15
THX® Certification	THX® Certified Ultra	THX® Certified Ultra	THX® Certified Ultra	THX® Certified Ultra (with 2x Cinergy Sub15s)
System Format	3-way	3-way	3-way	N/A
Sensitivity (2.83v @ 1m)	89 dB	90 dB	90 dB	86 dB @ 100Hz
Maximum Linear SPL (@1m, free space)	Continuous 103 dB, Peak 116 dB	Continuous 109 dB, Peak 122 dB	Continuous 109 dB, Peak 122 dB	Continuous 109 dB, Peak 120 dB
Power Handling	Continuous 200W, Peak* 800W	Continuous 350W, Peak* 1400W	Continuous 350W, Peak* 1400W	Continuous 600W, Peak* 1500W (Band limited****)
Nominal Impedance	4 Ohms	4 Ohms	4 Ohms	4 Ohms
Minimum Impedance (20Hz to 20kHz)	3.8 Ohm	3.8 Ohm	3.8 Ohm	4 Ohms
Recommended Low Frequency Crossover Frequency	80-100Hz (High Pass)	80-100Hz (High Pass)	40-80Hz (High Pass)	40-100Hz (Low Pass)
Recommended Amplifier Requirements (unclipped programme power into 4 Ohms)	100-800W (IA200-2C or IA800-2C)	200-1400W (IA200-2C or IA800-2C)	200-1400W (IA200-2C or IA800-2C)	Must be used with IA800-2C running C Sub Profile
Bass Alignment	Ported**	Ported**	Ported**	Sealed
Port Tuning Frequency	67Hz**	47Hz**	38Hz**	N/A
LF Extension In Wall with port bungs (-6dB)	48Hz	47Hz	42Hz	N/A
LF Extension in free space without port bungs (-6dB)	65Hz	47Hz	42Hz	17Hz (IA800-2C)
HF Extension (-6dB)	>30KHz	>30KHz	>30KHz	N/A
Drive Unit Complement	1x 8" RDT Bass, 1x 2.5" C-CAM Mid, 1x MPD	2x 8" RDT Bass, 2x 2.5" C-CAM Mid, 1x MPD	2x 8" RDT Bass, 2x 2.5" C-CAM Mid, 1x MPD	1x 15" Ultra High Excursion C-CAM Subwoofer Driver
External Dimensions Exc Grilles, Terminals & Plinth/feet (H x W x D)	460 x 350 x 160 mm	904 x 300 x 160 mm	1080 x 300 x 240 mm	540 x 540 x 280 mm
External Dimensions Inc Grilles & Terminals (H x W x D)	460 x 350 x 174.1 mm	904 x 300 x 173.6 mm	1080 x 300 x 253.6 mm	540 x 540 x 280 mm
External Dimensions Inc Plinth & Isolation Feet (H x W x D)	N/A	N/A	1132 x 438 x 378 mm	N/A
Weight (Each)	18.4Kg	30Kg	40.4Kg	38.5Kg
Install Methods	In-Wall / On-Wall	In-Wall / On-Wall	Floorstanding / In-Wall	Floorstanding / In-Wall
Finishes	Black Chemthline (PU)			

* Calculated from a peak voltage, this is not a true power figure but useful for comparisons.

** When used in an In-Wall or On-Wall configuration it is recommended to use the fitted port bungs to control bass output. This will effectively make the product a sealed box.

*** Band limited with Low pass at 200Hz, should only be used with IA800-2C and the correct speaker profile.

**** Tested with a music like noise signal with distortion and power compression remaining below audible limits.

Monitor Audio
24 Brook Road
Rayleigh, Essex
SS6 7XJ
United Kingdom

T: +44 (0)1268 740580
E: info@monitoraudio.com
W: monitoraudio.com